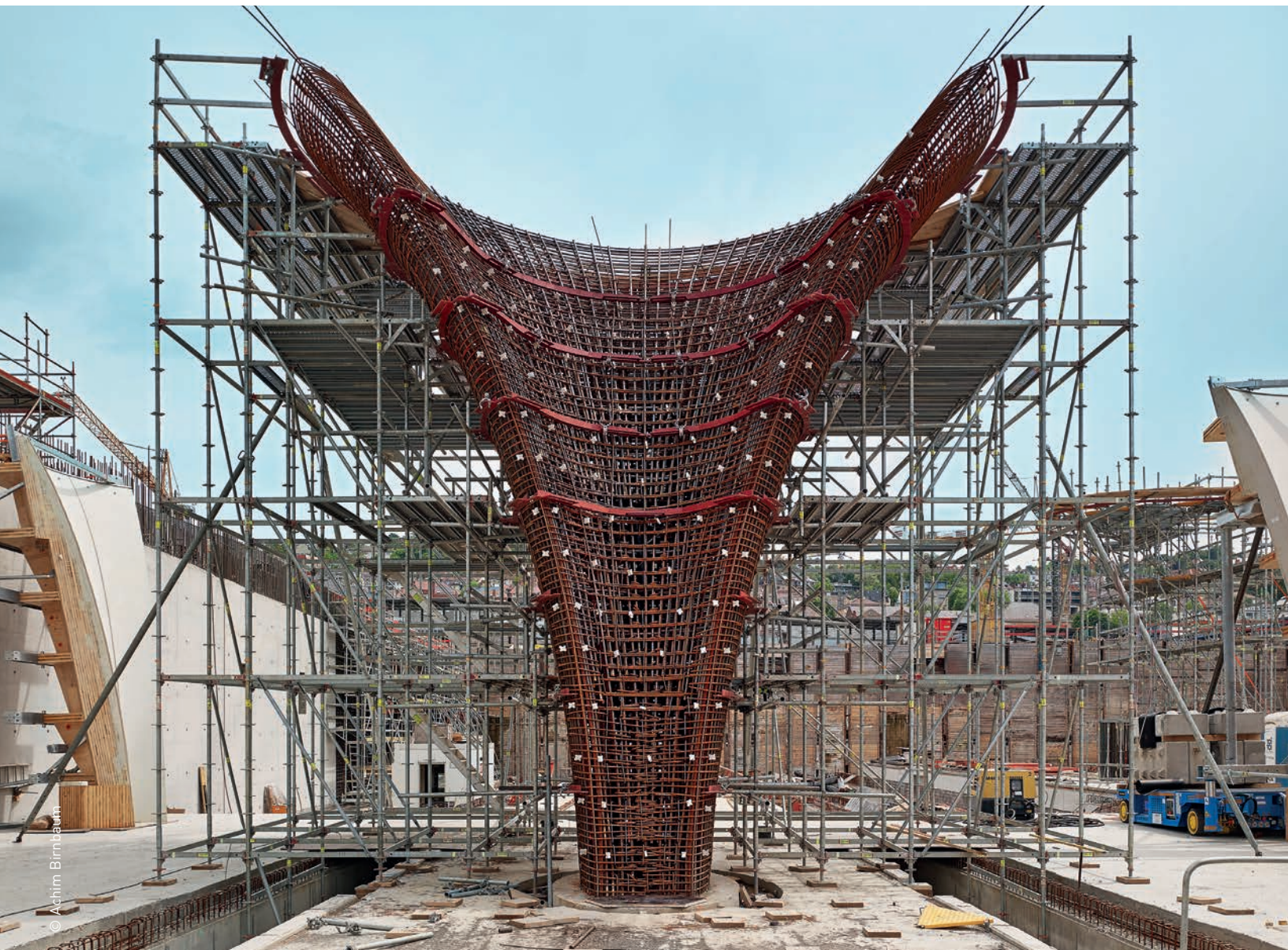
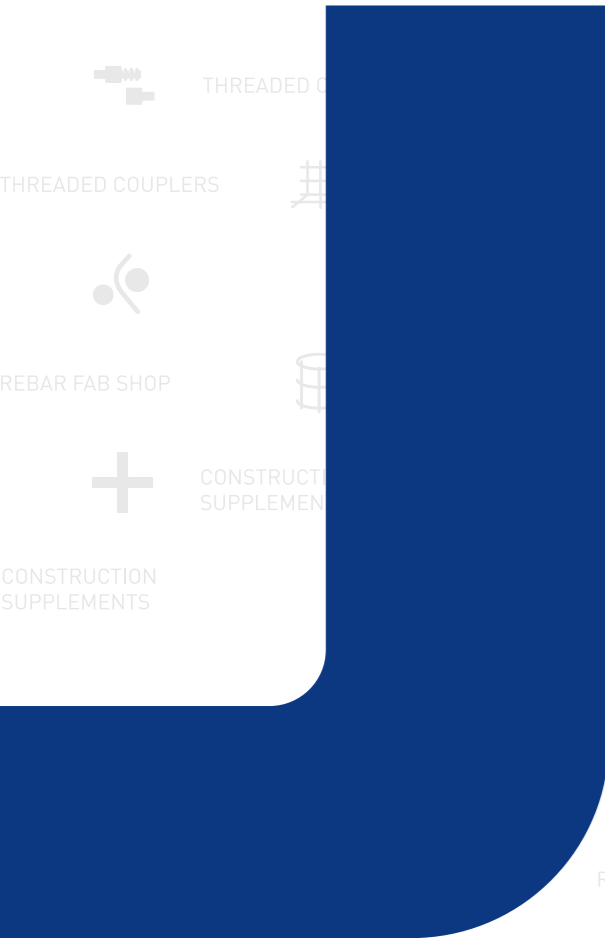
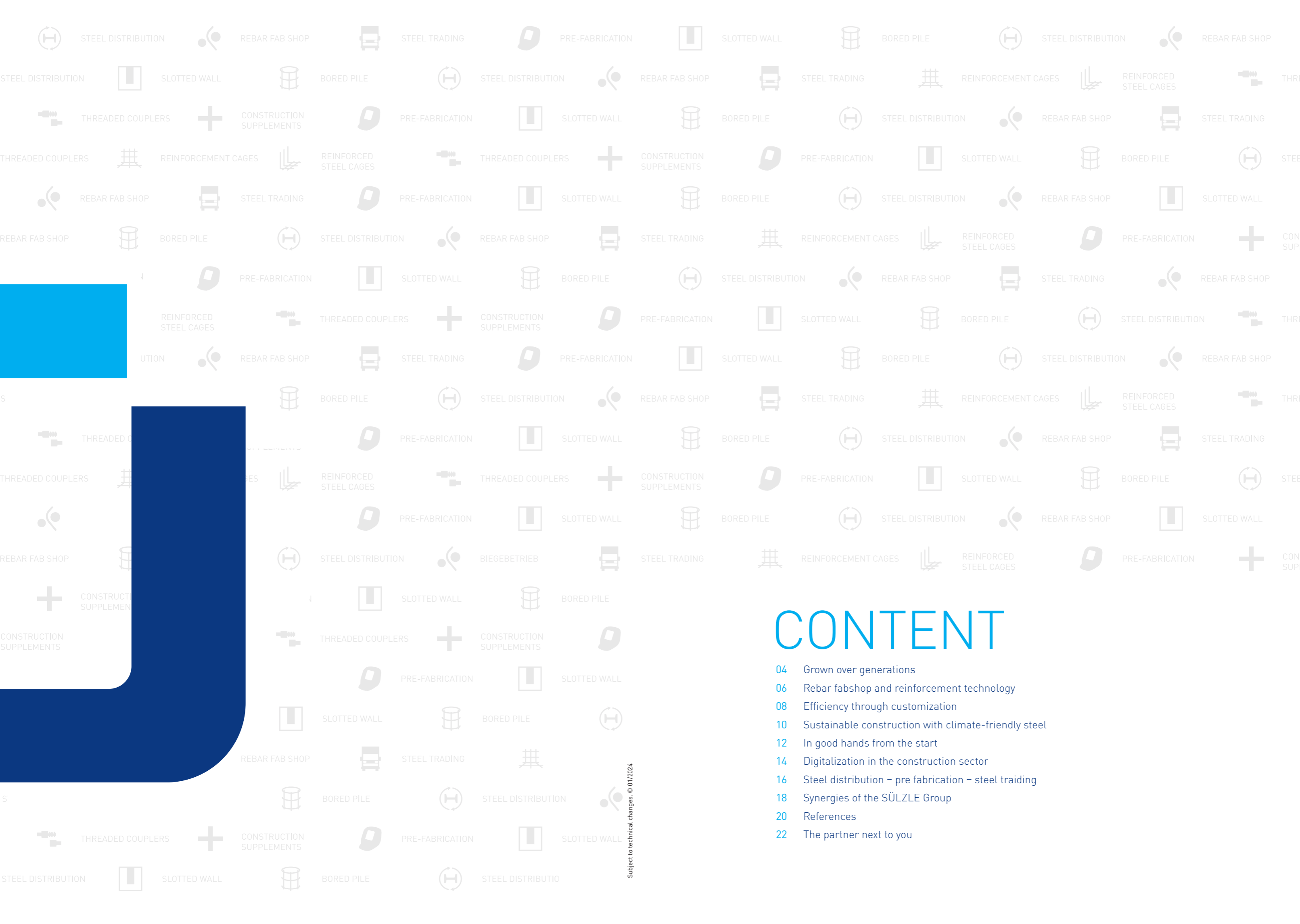


SÜLZLE
STAHLPARTNER

We love reinforcement.



© Achim Birnbaum



CONTENT

- 04 Grown over generations
- 06 Rebar fabshop and reinforcement technology
- 08 Efficiency through customization
- 10 Sustainable construction with climate-friendly steel
- 12 In good hands from the start
- 14 Digitalization in the construction sector
- 16 Steel distribution – pre fabrication – steel trading
- 18 Synergies of the SÜLZLE Group
- 20 References
- 22 The partner next to you

Subject to technical changes. © 01/2024

SERVICE SPECTRUM

We support you in these areas across all locations, reliably, with the highest know-how.

REBAR FABSHOP

REINFORCEMENT TECHNOLOGY

THREADED COUPLER

CONSTRUCTION SUPPLEMENTS

STEEL DISTRIBUTION

PRE-FABRICATION

STEEL TRADING



GROWN OVER GENERATIONS

We have been dedicated to steel for more than a century. Wilhelm Sülzle founded his forge in Rosenfeld in 1880. Today this has become SÜLZLE Stahlpartner, with 16 locations throughout Germany and a total warehouse space of 310,000 m². As steel partners, we are committed to the philosophy of consistently being a reliable partner to customers, suppliers, and employees, and providing sustainable solutions in line with our three-winners principle.

For us, this means first and foremost being reliable, acting fairly and, above all, doing our best every day to solve tasks in trade, industry or commerce. We do not differentiate according to project size or budget, only the technical focus of your request determines your contact person. They will accompany you from the initial contact through to implementation, providing support with a second opinion or a new approach if required.

This is the main reason why we confidently say: We offer good steel and live reinforcement. Whether for small construction projects like detached or semi-detached houses, industrial and office buildings, or large infrastructure projects such as bridges, tunnels, highways and wind turbines – we scale our presence to meet the customer's requirements.

Because with us, you gain access to the collective expertise of the entire group for your product solution. As a member of the SÜLZLE Group, SÜLZLE Stahlpartner is not only connected with experts from the steel and plant construction industries.

SÜLZLE
STAHLPARTNER

IMPRESSIVE QUALITY



VAST
AS YOUR NEEDS
REQUIRE



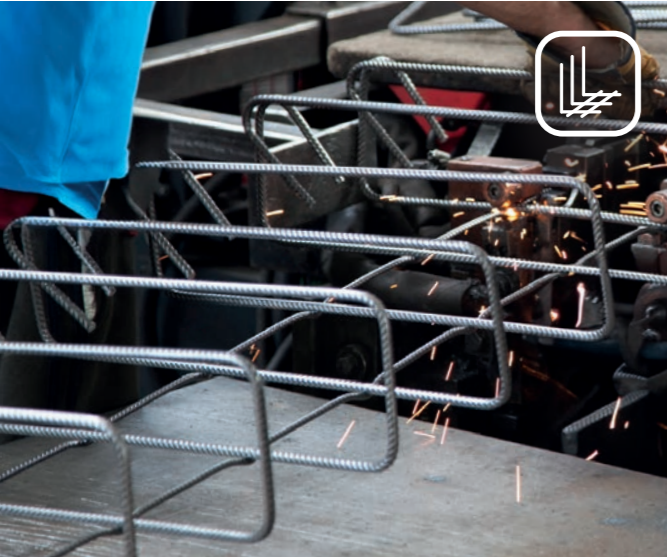
REBAR FABSHOP AND REINFORCEMENT TECHNOLOGY

Concrete reinforcement steel in rod shape, coils, as storage and list mats – bent, cut or even as a ready-welded reinforced steel cage in any quality, shape and quantity. In our 16 rebar fabshops in Germany, we offer a comprehensive range of products and services, with professional reinforcement technology and processing playing a special role.

Our product solutions are used in various construction projects, from buildings, halls, roads, bridges and tunnels to other infrastructure projects. Together with our customers, we find the right solution for every project size and technical challenge. We are vast as your needs require. Our experienced employees, state-of-the-art machinery and vehicle fleet as well as automated and digitalized processes ensure precise production, processing and order-related assembly as well as on-time delivery to the construction site.

Partnership, reliability and flexibility are also important core pillars of our work in reinforcement. This enables us to respond to your needs at all times – even if unforeseen circumstances change. At the same time, thanks to our specialist knowledge and quality management, which has grown over generations, and the precision of state-of-the-art machines, you can rely on exact bending accuracy and the best bending quality as well as on our delivery dates.

EFFICIENCY THROUGH CUSTOMIZATION



SÜLZLE REINFORCED STEEL CAGE (SAK)

SÜLZLE reinforcement cages are produced individually to order and according to customer specifications. With a bar diameter of 8 to 14 mm and a stirrup spacing from 50 mm, we manufacture CNC-controlled foundation cages or cap stirrups with the highest precision. They increase one-man performance on the construction site and guarantee 100 % accuracy of fit thanks to machine production. This can save up to 50 % of working time on site, depending on the design. The optimization of the reinforcement routing also ensures significant material savings.



BORED PILE REINFORCEMENT

SÜLZLE reinforcement cages for bored piles are ideal if a deep foundation is necessary due to the unsuitability of the ground. Thanks to our state-of-the-art machinery, bored pile reinforcements up to a length of 18 meters can be manufactured as individual cages with a diameter of 190 to 1,700 mm, longer cages are manufactured as butt cages. Professionally welded flat steel rings, base crosses, base plates and spacers ensure the necessary stability in accordance with structural analysis and applicable standards – customized and precisely fitting.



DIAPHRAGM WALLS

SÜLZLE diaphragm wall reinforcement is often used in the construction of excavation pits, where it is inserted vertically into the ground and then concreted. This construction method prevents neighboring buildings, facilities or roads from slipping into the excavation pit. The slots in the ground are created using our customers' diaphragm wall grabs. The diaphragm wall reinforcement for special civil engineering from SÜLZLE Stahlpartner can be manufactured in various shapes up to a length of 23 meters as a single cage and, if longer installation lengths are required, as a butt cage. Furthermore, we can manufacture cages up to 3,000 mm wide and 2,500 mm high and produce unit weights of up to 25 tons with our modern production and crane systems on a project-specific and tailor-made basis.



THREADED COUPLER

Our construction accessories such as threaded coupler are also tried and tested and well thought-out: we offer you a wide range of standard couplers, positioning couplers and reducing couplers that connect reinforcing steel directly and without any additional tools. Screw connections replace the need to butt the reinforcement and offer 100 % load-bearing capacity for tensile, compressive and dynamic loads. The reinforcement is accepted with a simple visual inspection, giving you maximum safety and reducing your costs.



For us, fine craftsmanship is encapsulated in simplifying complex tasks.

We offer you professional products and services that have become a proven standard thanks to our experience. For your everyday life, they mean time savings, higher quality and safety and therefore and thus a clear competitive advantage.

Discover with us your customized solution.



SUSTAINABLE CONSTRUCTION WITH CLIMATE- FRIENDLY STEEL



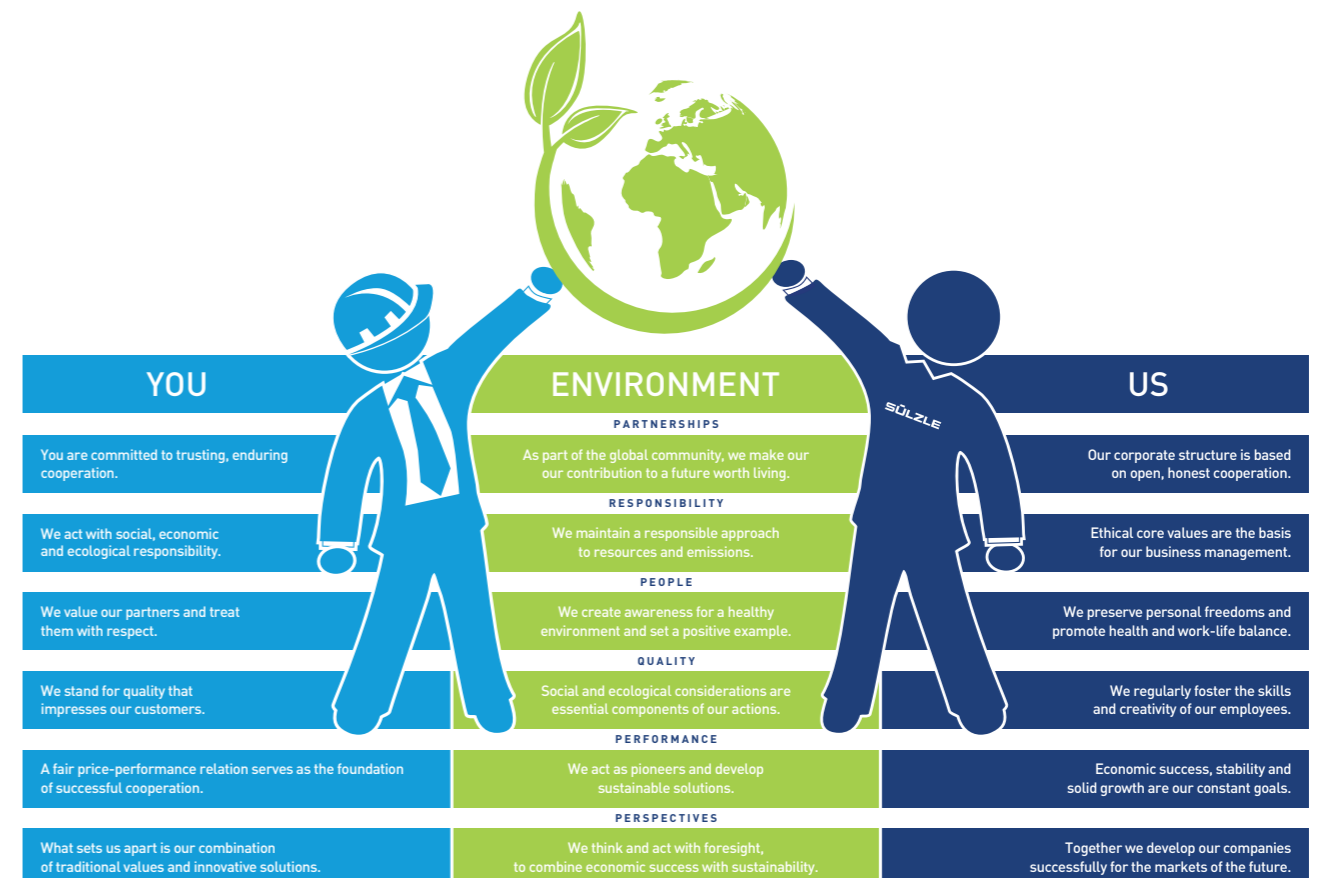
We all have a responsibility for a stable, sustainable future. As CO₂ emissions continue to rise, our climate is becoming increasingly polluted. In addition, future generations will have fewer and fewer resources at their disposal. Due to the clear trend towards sustainable construction, the use of recyclable building materials is therefore becoming increasingly important. Steel is unsurpassed in its recyclability. It can be recycled an infinite number of times without any loss of quality!

We from SÜLZLE Stahlpartner are aware of our responsibility and want to make our contribution, which is why we have taken a close look at our carbon footprint. Our climate-relevant emissions are regularly analyzed, reduced and offset. As one of the leading steel distributors in Germany and a driver of innovation in the industry, we want to offer our partners and customers the opportunity to buy climate-friendly steel from SÜLZLE Stahlpartner.

To this end, we have created automated, digitalized and coordinated production and logistics processes at several locations in recent years. Sustainable, resource-conserving and employee-friendly. We also focus on the upstream supply chain and are in direct contact with numerous international steelworks. We mainly source reinforcing steel from our upstream suppliers from electric steel production, which already reduces the carbon footprint by around 70 % compared to conventional blast furnace production. And this from specially selected suppliers. This means that the CO₂ footprint can be reduced by a further 30% compared to standard electric steel production.

We have also optimized logistics to the construction site, largely through our own modern truck fleet, and will continue to do so in the future with AI-controlled route planning, tracking tools, fuel reduction and investments in sustainable drive systems, among other things.

We have also optimized logistics to the construction site, largely through our own modern truck fleet, and will continue to do so in the future with AI-controlled route planning, tracking tools, fuel reduction and investments in sustainable drive systems, among other things.





CONSULTING

REQUEST

OFFER

ORDER

PLANNING

MANUFACTURING

DELIVERY

SERVICE

FROM THE OUTSET, IN CAPABLE HANDS

In our 16 rebar fabshop, joint detailed planning forms the basis for successful cooperation based on partnership.

Practical and customer-oriented work processes make your wishes as an individual or major contractor our benchmark.

At the same time, we combine our expertise, which has grown over generations, with the precision of state-of-the-art machinery and thus offer high performance across the board for both reinforcing steel and welded reinforcement. This can be seen, for example, in the high bending accuracy and quality.

Thanks to our own extensive fleet of vehicles and professional logistics management, we ensure reliable just-in-time delivery to the construction site.

But above all, you will appreciate the smooth organization: Because for good steel, we think your order through from the initial inquiry to delivery. In this way, we offer holistic, customized individual solutions, no matter how difficult the challenge.

[Talk to us and find out more about our steel and reinforcement services.](#)



Partnership



Precision



Solution



Quality



Logistics

SÜLZLE AKADEMIE

INFORM NOW:
Seminars and further training opportunities.



The SÜLZLE Academy imparts knowledge from practice for practice and offers seminars for business partners and customers such as load securing, crane operation, floor handling, aerial work platforms, telescopic forklifts or for professional drivers (BKrFQG). Thanks to our branches throughout Germany, the training courses we offer can be implemented for you individually and directly on site in many regions.

DIGITIZATION IN THE CONSTRUCTION SECTOR

Whether structural or specialist planners, architects, small and medium-sized construction companies or general contractors – companies in the construction industry face intense competition. To be successful in the market, they need cost-saving and digitalized processes as well as transparency and flexibility in their collaboration with suppliers. We would like to support you with our digitalization services, reduce interfaces, avoid sources of error and thus offer our customers a clear competitive advantage.



Cost savings



Automation



Time saving



Environmentally friendly



Archiving

ELECTRONIC REINFORCEMENT DATA

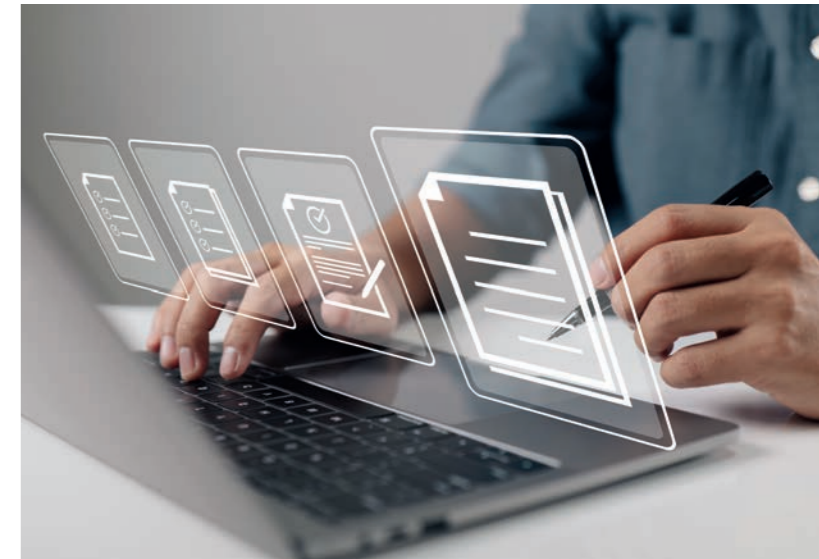
Steel and bending lists including ABS files and desired delivery dates can be transmitted electronically to SÜLZLE Stahlpartner. This enables better transmission quality of our customers' reinforcement data, as manual input errors are avoided. It also saves resources and protects the environment, as no paper is required. Planning reliability is increased by shorter delivery and response times.



FURTHER INFORMATION ON ABS FILES
WATCH VIDEO NOW
and learn more.

ELECTRONIC DELIVERY BILL

In addition to the printed delivery bills, a digital delivery bill can be sent as a PDF to the e-mail address requested by the customer. In addition to the PDF, this e-mail contains an XML file of the delivery bill, which can be used for import and processing in IT systems. The XML file contains all relevant planning data including the individual items and surcharges. This makes the work easier and avoids problems.



DIGITAL INVOICE BY E-MAIL

The PDF invoice from SÜLZLE Stahlpartner can be transferred directly to the customer's invoice receipt workflow and to the electronic archive – quickly and easily. As invoices no longer need to be printed and sent, paper consumption and CO₂ emissions are significantly reduced.



ZUGFERD INVOICE

The "ZUGPFerD"-Format is a specification for the electronic invoice, developed by the German forum of electronic invoice. This ZUGFeRD standard enables even the smallest companies to exchange digital invoices conveniently, quickly and easily with their customers electronically using an XML file to read the data.





STEEL DISTRIBUTION

For us, it's in the word itself: Steel distribution – we act in partnership with you. We stand for optimal customer solutions, the best conditions, the shortest delivery times and that in every quantity and quality, from beams to flat product, from tubes, angles to sheets. Over four generations, we have built up many partnerships that we put to work for you. Our direct relationships with European and international steelworks guarantee you fair prices. Our own warehouses and personal advice guarantee a customized and needs-based solution. We supply products made of steel, stainless steel, aluminum, copper or brass, whether standard or customized.



PRE-FABRICATION

Whether sawing, drilling, welding, bending, thread cutting or surface treatment, our experts implement every requirement for trade and industry with precision. We leave nothing to chance, every step of pre-fabrication is in our hands. Our wide range of stock, modern machinery and the extensive experience of our skilled workers offer maximum precision, flexibility and planning reliability – even for orders at short notice. We certify our processes and are constantly developing our processing services. In this way, we relieve our customers of ancillary activities and free up space for their core competencies.



STEEL TRADING

Whether standard or drawing mesh, reinforcing steel in bars or coils or reinforcing wire – large quantities of different types of reinforcing steel are traded in the drop shipment business. But even here, we never lose sight of our highest premise: to put you, the customer, at the center of our work. Regardless of whether you need support in making a decision or require a delivery at short notice.

We have been generating a growing purchasing volume in reinforcing steel for years and are regarded as experienced buyers, but above all as fair sellers. You benefit from our contacts to national and international steelworks, our network and our good conditions. We know the market and will advise you in detail on your purchase decision – personally on site if you wish.



In addition to SÜLZLE Stahlpartner, we have further expertise and specialists in the field of steel. Below are three companies in the SÜLZLE Group which, in close cooperation synergies for your projects and orders:

SÜLZLE ARMIERUNGSTECHNIK

As a reinforcing steel installation company, SÜLZLE Armierungstechnik specializes in the professional installation of concrete reinforcement steel. The aim is to provide comprehensive advice and support: from ordering, installation and coordination to delivery and laying – process-optimized and in close cooperation with our customers. SÜLZLE Armierungstechnik relies on its own workforce and highly qualified subcontractors. These are certified internally and are subject to ongoing quality control in order to guarantee a high quality of work, flexibility and operational readiness.



SÜLZLE NUTZEISEN

SÜLZLE Nutzeisen specializes in the sale, rental and repurchase of new and used steel for civil engineering civil engineering, special civil engineering, excavation support and bridge construction. The certified steel construction company supplies ready-to-install steel material quickly and reliably. Thanks to the sustainable business model, steel can be recycled and reused as a valuable material, thus contributing to the circular economy. However, it is the flexibility – whether in terms of qualified in-house processing, contract design or the implementation of the shortest delivery times – that makes SÜLZLE Nutzeisen a reliable partner – for every project and at all times.



SOTRALENTZ CONSTRUCTION

SOTRALENTZ CONSTRUCTION, based in Drulingen, Alsace, has decades of experience in the manufacture and design of individual reinforcement for reinforced concrete construction with particular expertise in list and bearing meshes, coils and bars as well as segment reinforcement for tunnel construction. The French company has earned an excellent reputation in this market thanks to its high quality and flexibility. It supplies customers throughout Europe – particularly in Switzerland, the Benelux countries, Germany and, of course, France.

You can find other companies in the SÜLZLE Group here: www.suelzle-gruppe.de/en/

REFERENCES

Our activities focus on the numerous projects of our customers. The experts at SÜLZLE Stahlpartner process and supply sophisticated reinforcement for industrial and residential construction, for infrastructure projects in building construction and civil engineering, such as roads, tunnels, bridges, energy and wind power plants, railroad stations and airports as well as other structures. Here is a small insight into our references:

MUNICH PROJECT "DER BOGEN"

With the "DER bogen" office complex, a sustainable building ensemble with high architectural and urban planning standards will be built in Munich by the end of 2024. SÜLZLE Stahlpartner was commissioned by Gustav Eppler Bauunternehmung GmbH to supply 6,800 tons of climate-friendly round steel and 10 tons of storage mats. The construction site was supplied by the SÜLZLE Stahlpartner locations in Denkendorf, Aichach, Dusslingen and Rosenfeld.



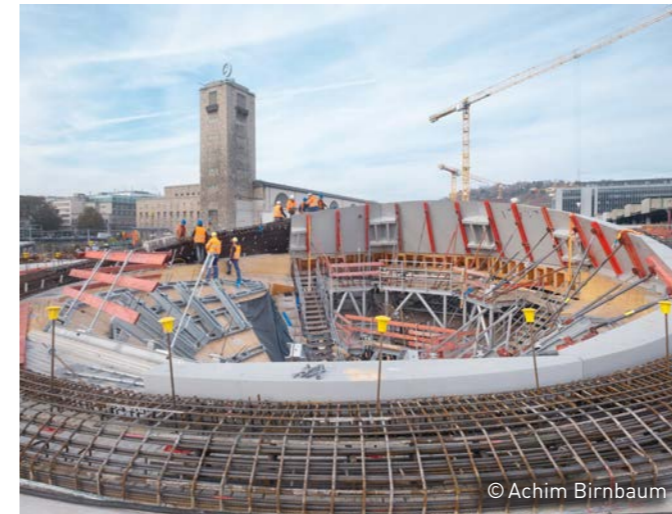
WINDPARK MARKBYDGEN SWEDEN

Around 14.500 tons of reinforcing steel (cut and bent) were sent from the SÜLZLE Stahlpartner site in Dessau-Roßlau to Ersträsk in the far north to serve as reinforcement for the foundations of the wind turbines, which are up to 200 m high. A total of 150 wind power foundations were erected in this wind farm just outside the Arctic Circle. The distance of almost 2.400 km posed a major challenge in terms of logistics.



KOHLBERGTUNNEL

The entire Pirna construction project will include four major engineering structures by 2024, including the 916-metre-long viaduct over the Gottleuba Valley, the Kohlberg Tunnel and two other bridges. The 3.8-kilometre-long new construction route connects the B172a freeway feeder road with the existing B172 federal road in Pirna-Sonnenstein and is intended to relieve the town of Pirna of traffic and congestion and thus also of noise and pollutants. Over 2,200 tons of reinforcing steel from SÜLZLE Stahlpartner in Dessau-Roßlau are being used.



STUTTGART 21 - MAIN STATION

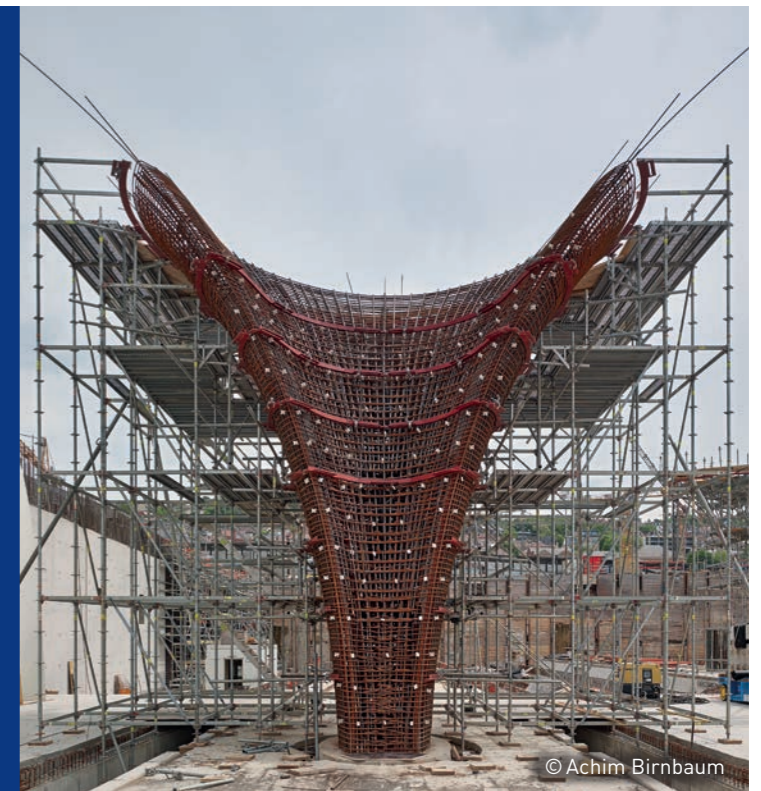
Stuttgart 21 is a true project of the century, which offers great opportunities for urban development and the Stuttgart metropolitan region in terms of transportation and, as a result, also economically. Ed. Züblin AG relied on SÜLZLE Stahlpartner to manufacture the customized reinforcement. The "S21" project bending shop in Denkendorf was created specifically for this purpose. Around 90.000 tons of concrete reinforcement steel, 100.000 threaded coupler and spacers were supplied by SÜLZLE Stahlpartner branches throughout southern and eastern Germany for this major construction project.

”

That was real pioneering work. At the beginning, it was impossible to foresee the technical challenges involved in building the chalice supports. However, everyone involved pulled together and made it possible for all 28 chalice supports to be completed in June 2023.

Thomas Hauser

Senior Project Manager at Ed. Züblin AG

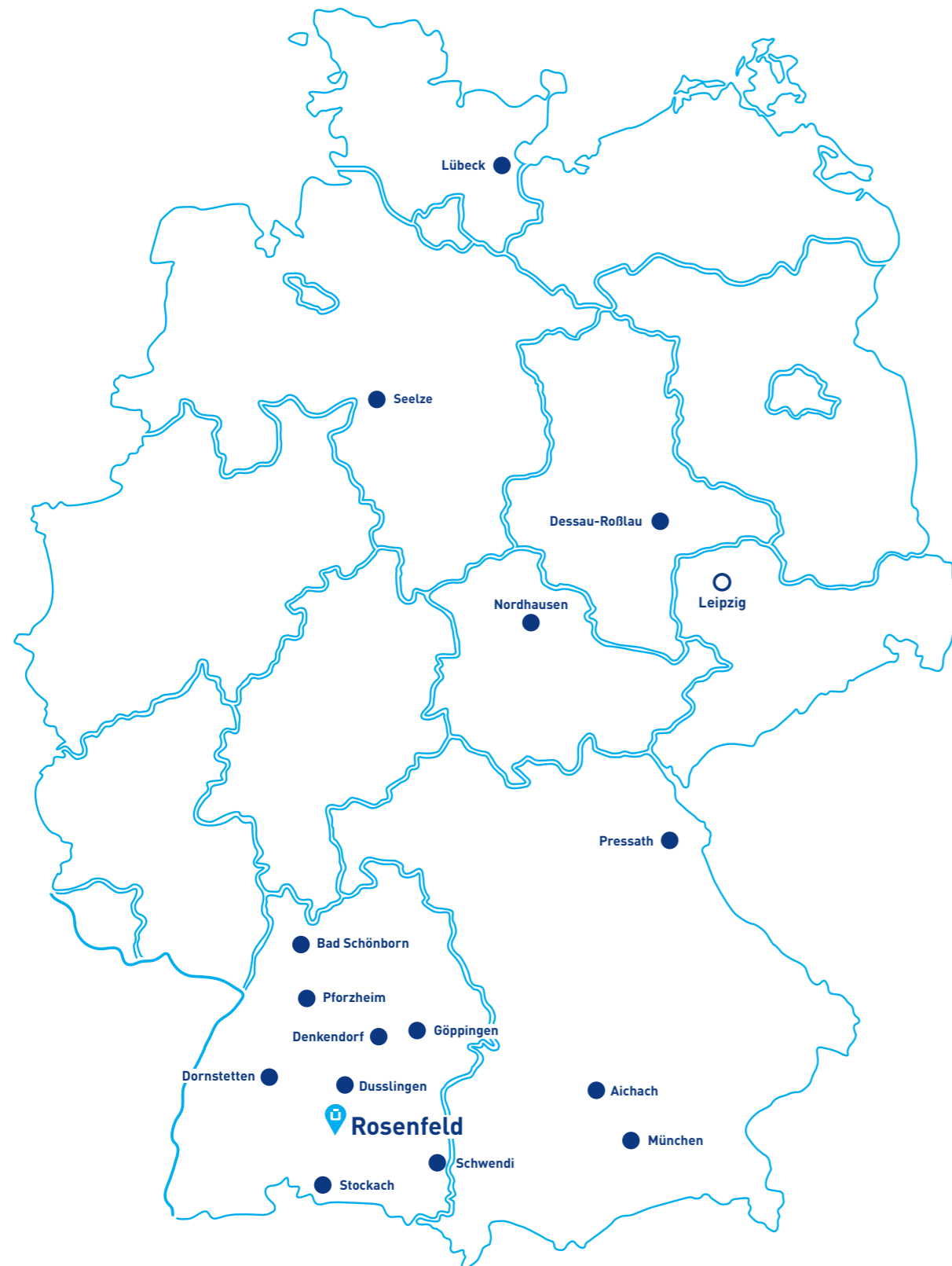


SÜLZLE Stahlpartner – we live reinforcement.

You can find more references on our website.



THE PARTNER NEXT TO YOU



72348 ROSENFELD
Hauffstraße 14+15
Tel. +49 7428 9414 - 0
rosenfeld@suelzle-stahlpartner.de

73033 GÖPPINGEN
Großeislinger Straße 61-63
Tel. +49 7161 6733 - 0
goeppingen@suelzle-stahlpartner.de

88477 SCHWENDI
Im Ried 20
Tel. +49 7353 9812 - 90
schwendi@suelzle-stahlpartner.de

86551 AICHACH
Hanns-Martin-Schleyer-Straße 15
Tel. +49 8251 81933 - 0
aichach@suelzle-stahlpartner.de

04107 LEIPZIG (VERTRIEBSBÜRO)
Karl-Liebknecht-Straße 47
Tel. +49 341 200171 - 06
leipzig@suelzle-stahlpartner.de

30926 SEELZE
Industriestraße 1
Tel. +49 5114 81943 - 10
seelze@suelzle-stahlpartner.de

76669 BAD SCHÖNBORN
Am Landgraben 3
Tel. +49 7253 975904 - 40
bad-schoenborn@suelzle-stahlpartner.de

23554 LÜBECK
Posener Straße 36
Tel. +49 4518 08888 - 80
luebeck@suelzle-stahlpartner.de

78333 STOCKACH
Industriestraße 4
Tel. +49 7771 92791 - 0
stockach@suelzle-stahlpartner.de

73770 DENKENDORF
Körschtalstraße 96
Tel. +49 711 620082 - 0
denkendorf@suelzle-stahlpartner.de

81245 MÜNCHEN
Kronwinklerstraße 35
Tel. +49 8989 7968 - 0
muenchen@suelzle-stahlpartner.de

06862 DESSAU-ROSSLAU
Lukoer Straße 50
Tel. +49 34901 507 - 0
dessau-rosslau@suelzle-stahlpartner.de

99734 NORDHAUSEN
Südstraße 11
Tel. +49 3631 9062 - 0
nordhausen@suelzle-stahlpartner.de

72280 DORNSTETTEN
Lise-Meitner-Straße 8
Tel. +49 7443 2808 - 0
dornstetten@suelzle-stahlpartner.de

75179 PFORZHEIM
Im Hinteren Zeil 15
Tel. +49 7231 41909 - 0
pforzheim@suelzle-stahlpartner.de

72144 DUSSLINGEN
Birkenstraße 21
Tel. +49 7072 9161 - 0
dusslingen@suelzle-stahlpartner.de

92690 PRESSATH
Alte Eschenbacher Straße 10
Tel. +49 9644 9210 - 0
pressath@suelzle-stahlpartner.de



FIND YOUR LOCAL CONTACT PERSON

SÜLZLE

convincing.sustainable.

STEEL ENERGY IDEAS

Sülzle Stahlpartner GmbH
Hauffstraße 14+15
72348 Rosenfeld
Germany

phone +49 7428 9414 - 0
fax +49 7428 9414 - 20
mail info@suelzle-stahlpartner.de
web suelzle-stahlpartner.de

Part of the SÜLZLE Group.

